



# S2USB485

## USB to RS-485 and RS-232 Converter

### Introduction

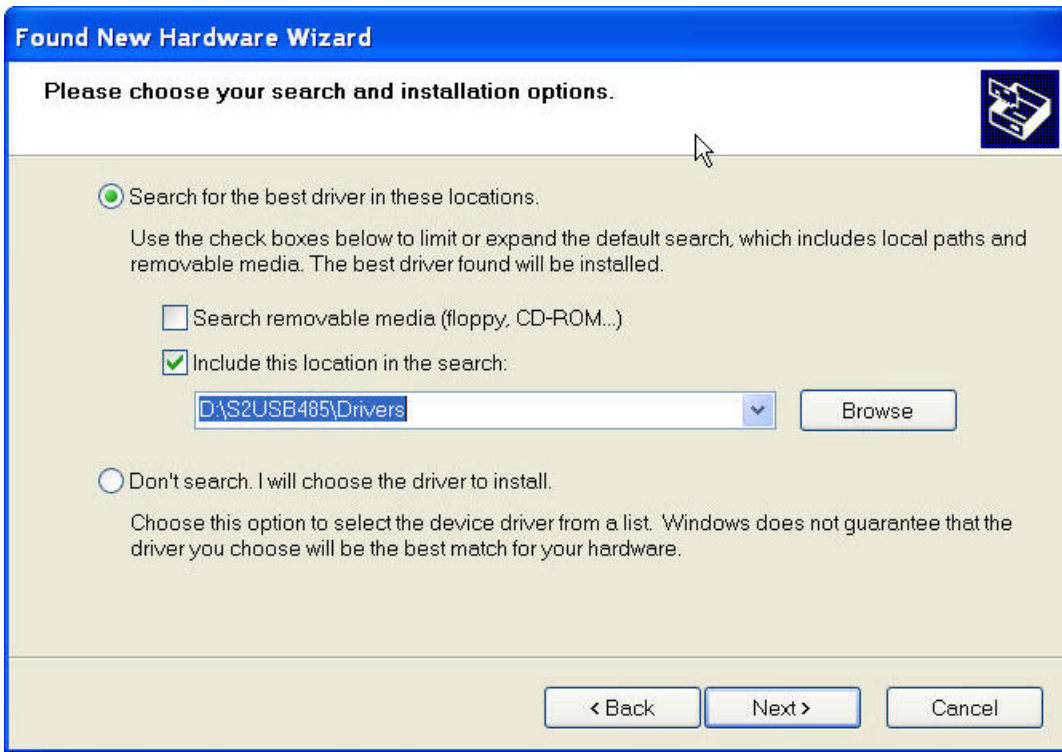
The S2USB485 is a USB to full-duplex RS-232 and half-duplex RS-485 serial converter integrated into a single device. In essence the S2USB485 is a single USB serial port that has two electrical interfaces available to it (RS-232 and RS-485).

### Installation Procedure

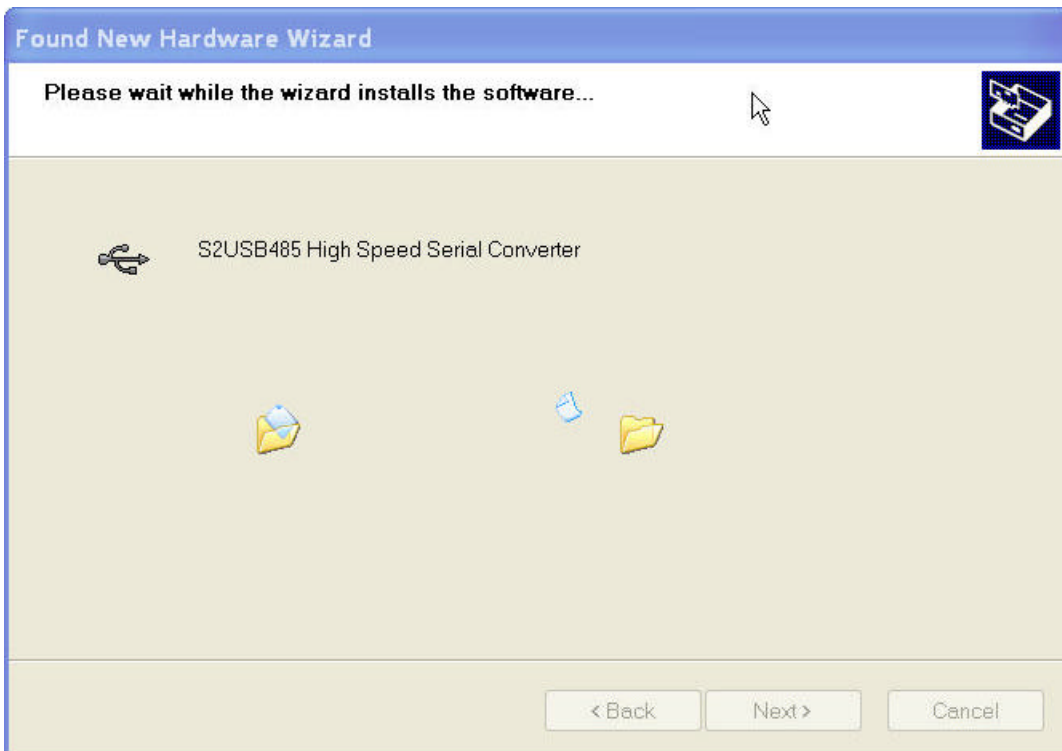
1. Connect the S2USB485 to the computer's USB port
2. If this is a first time installation, the following Message will appear:

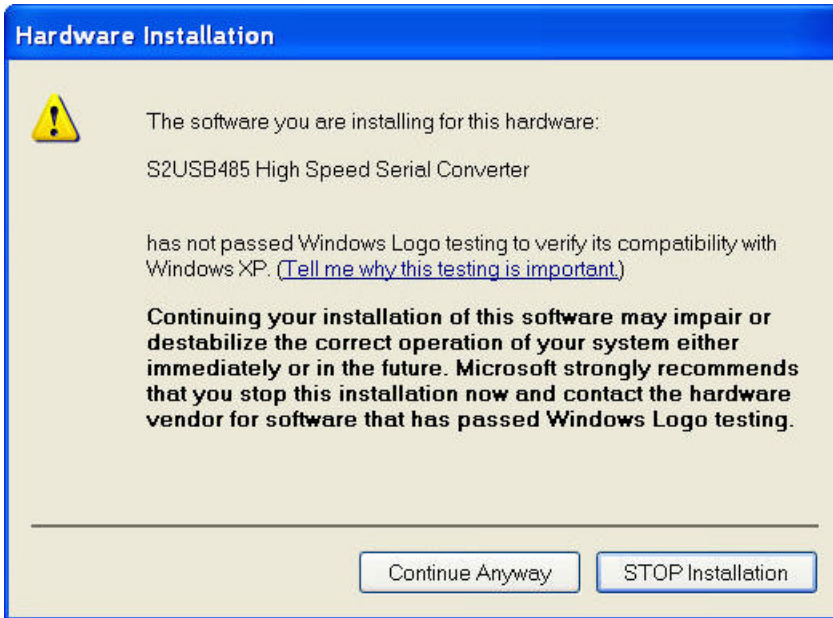


3. Select the "Install from a list or specific location" option and press next



4. Select the “Search for the best driver in these locations” option and check the “Include this location in the search” item. Now, insert the supplied “S2USB485 Drivers CD” and enter the path to the drivers in the text field. The path will be “CD Drive>:\S2USB485\Drivers” (see above). After you are finished, press next



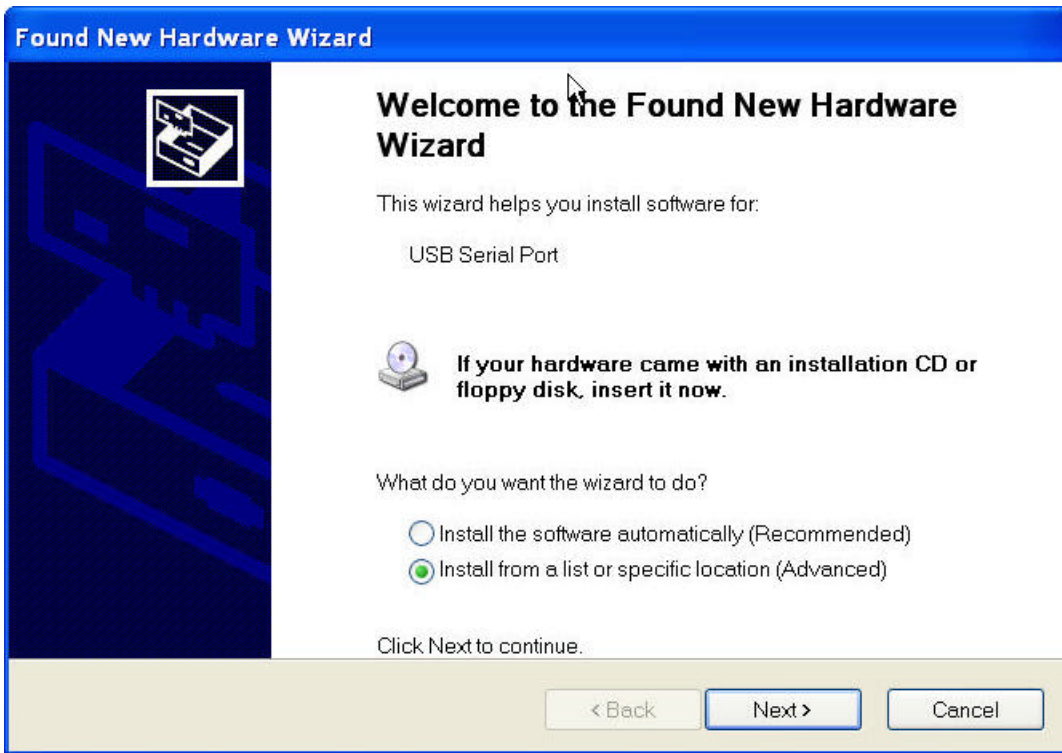


5. Select "Continue Anyway"

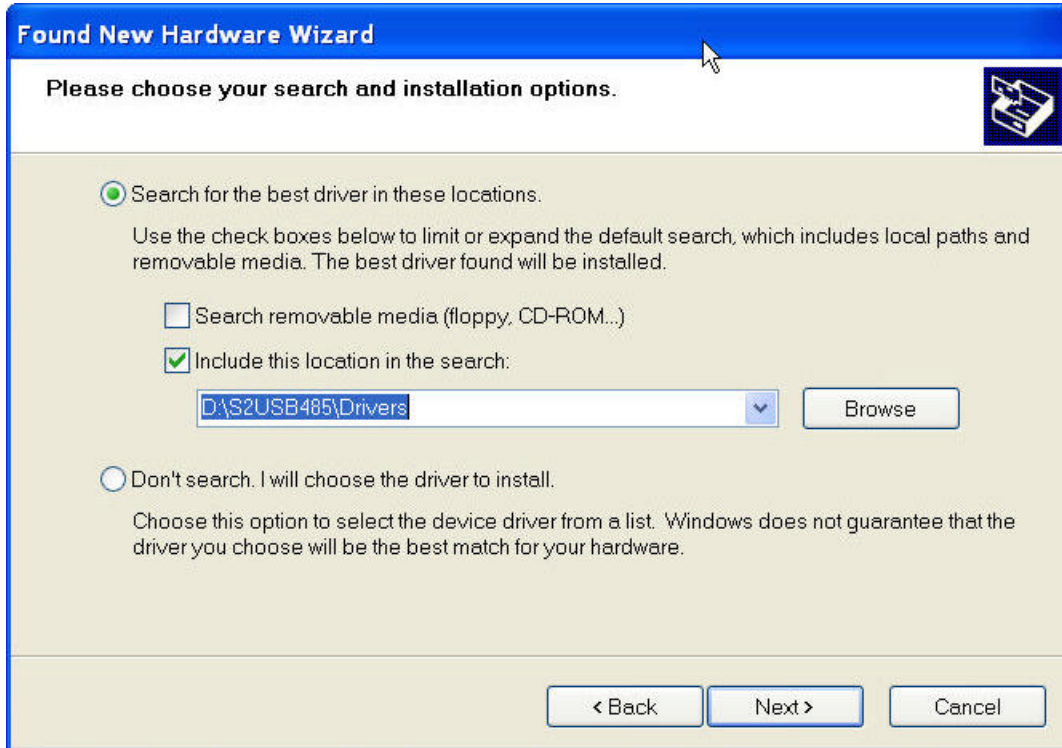


6. Pressing "Finish" will complete installation of the actual Hardware. Now, the virtual serial (COM) port used by the S2USB485 will be installed.

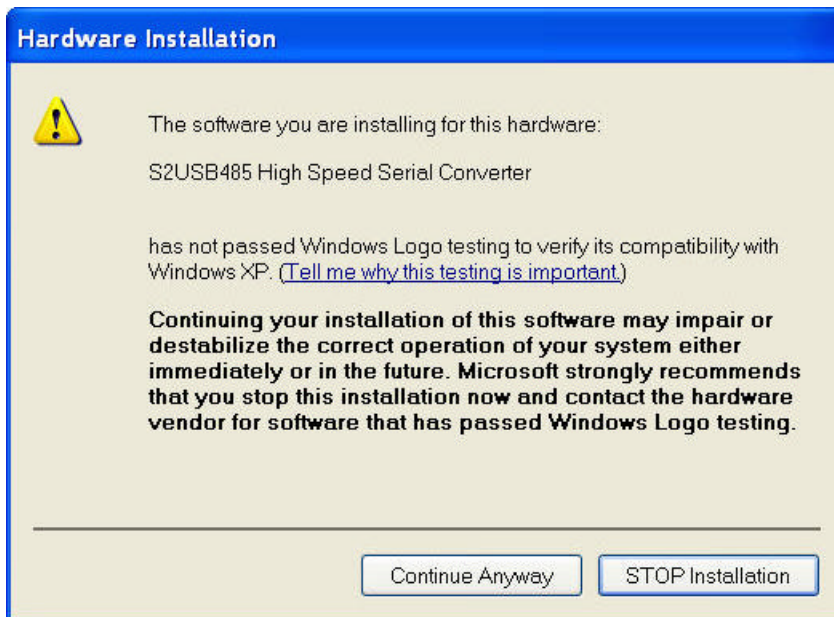
Installation of the Virtual serial (COM) port:



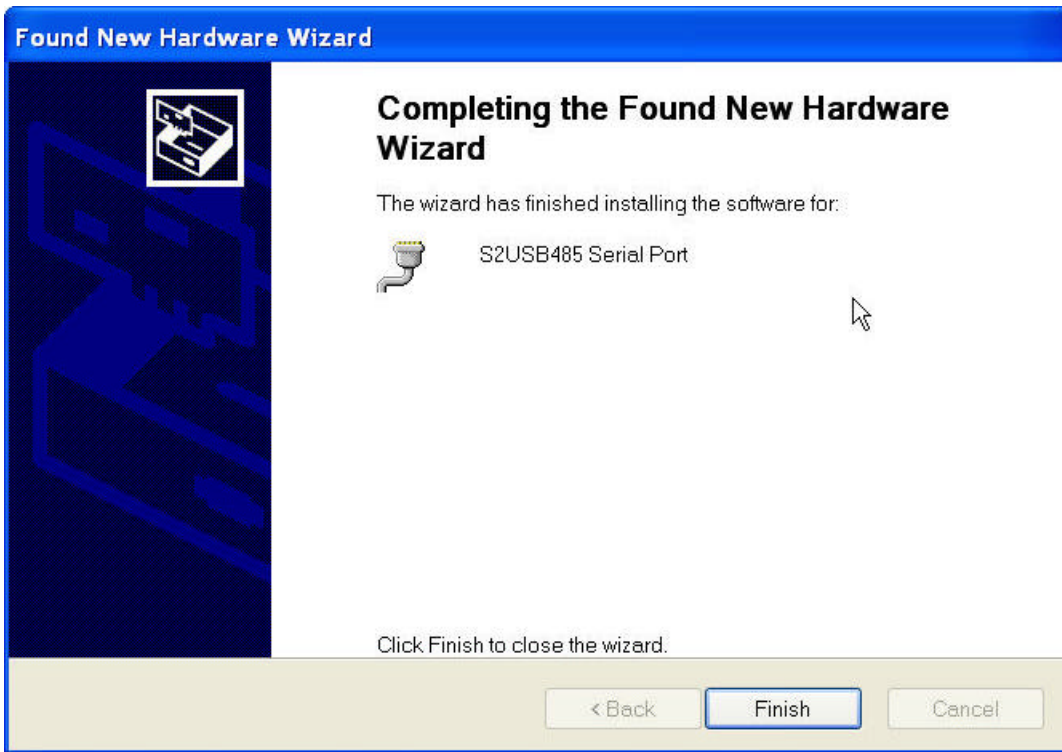
7. As before, select the “Install from a list or specific location” option and press next



8. Select the “Search for the best driver in these locations” option and check the “Include this location in the search” item. Now, insert the supplied “S2USB485 Drivers CD” and enter the path to the drivers in the text field. The path will be “CD Drive>:\S2USB485\Drivers” (see above). After you are finished, press next



9. Select “Continue Anyway”



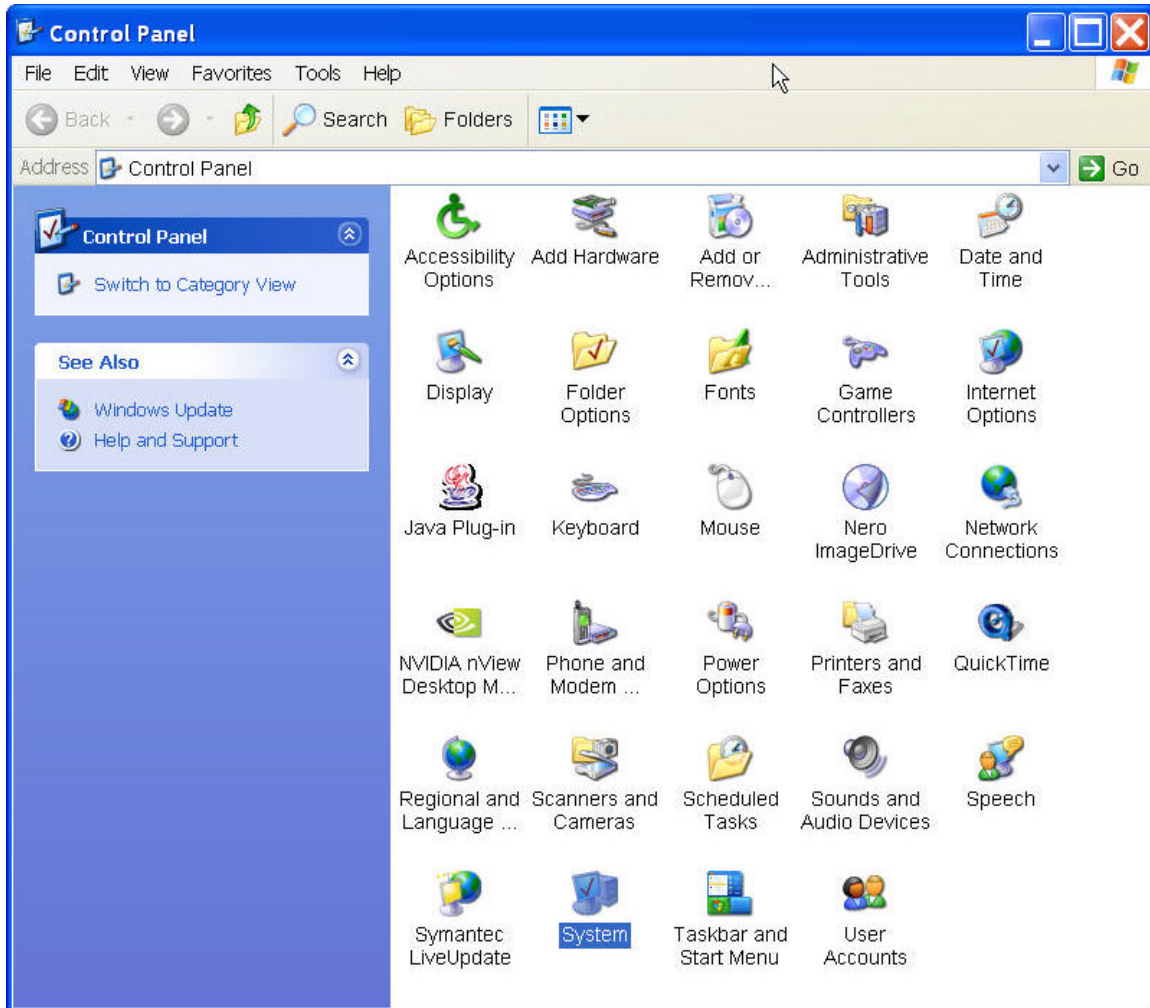
10. Pressing "Finish" will complete installation of the virtual serial (COM) port used by the S2USB485.

11. **Installation Complete.** The S2USB485 Device is now ready to be used!

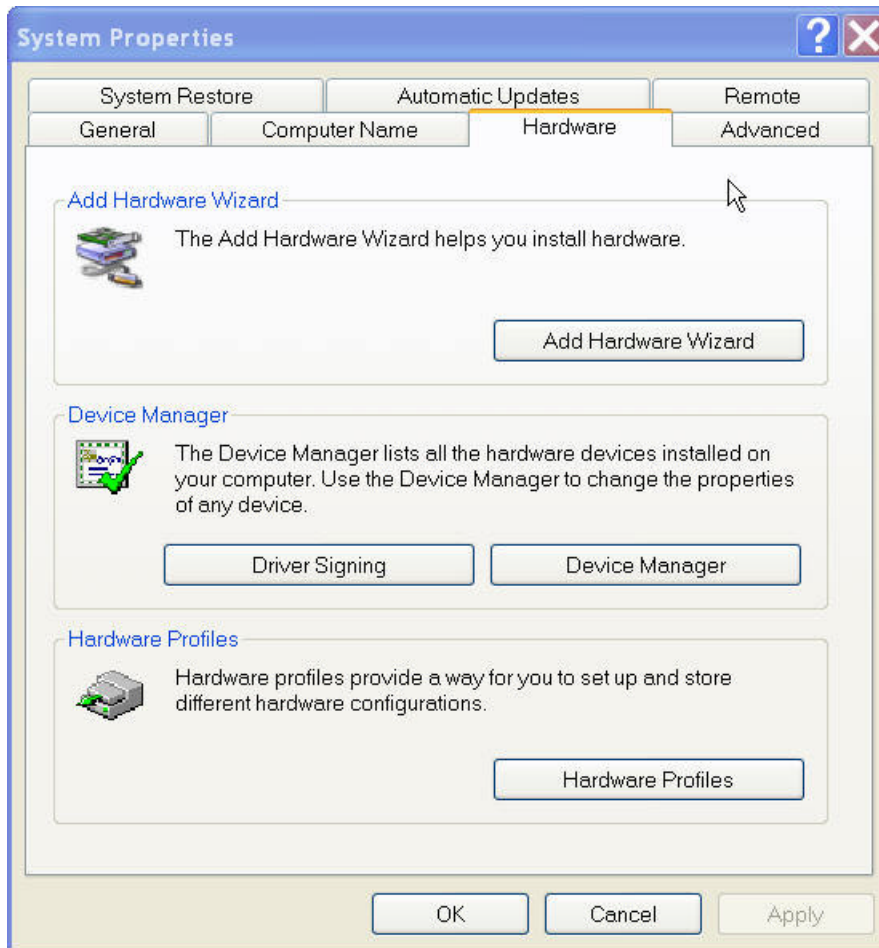
## Changing the Default Serial Port used by the S2USB485 Device

Changing the default serial port used by the S2USB485 is done via the following procedure:

1. From the Windows Task Bar, select “Start - Settings - Control Panel”

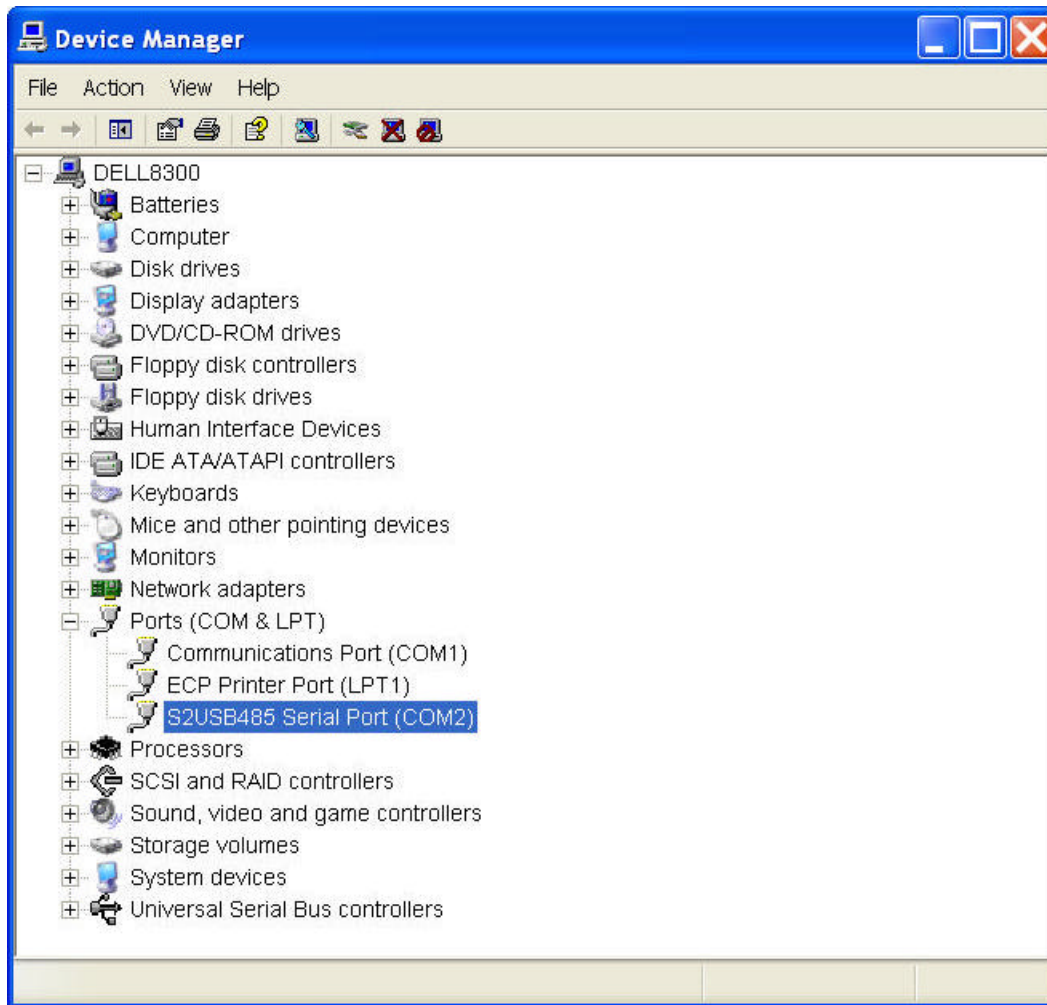


2. Double Click on the “System” Icon

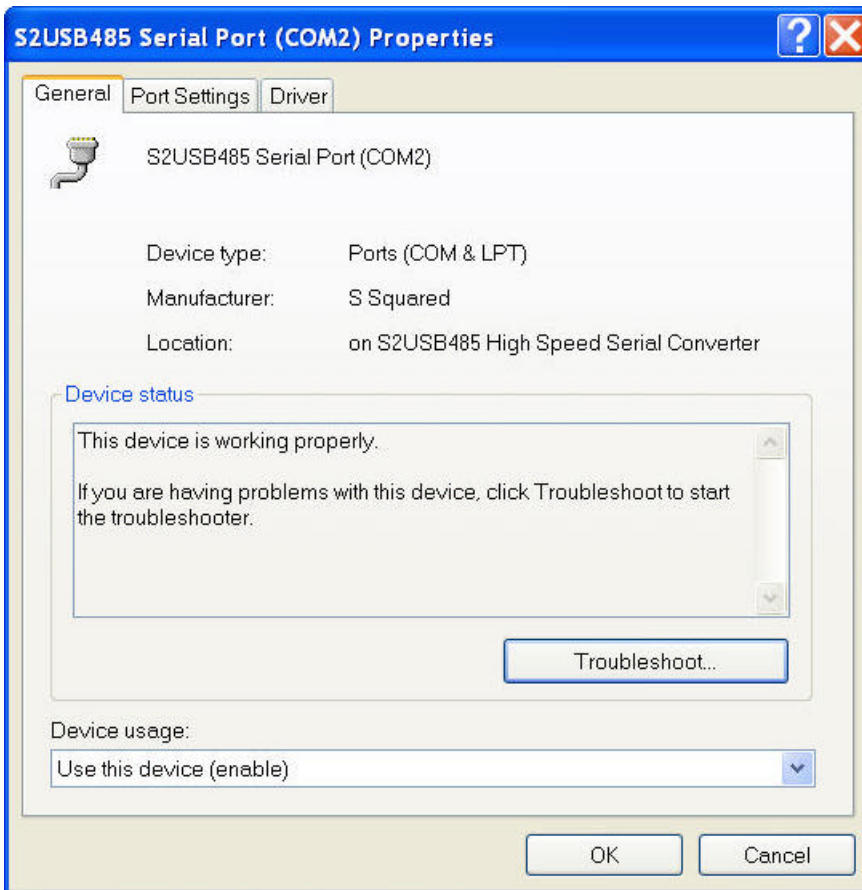


3. Select the “Hardware” Tab, and then the “Device Manager” button (see above).

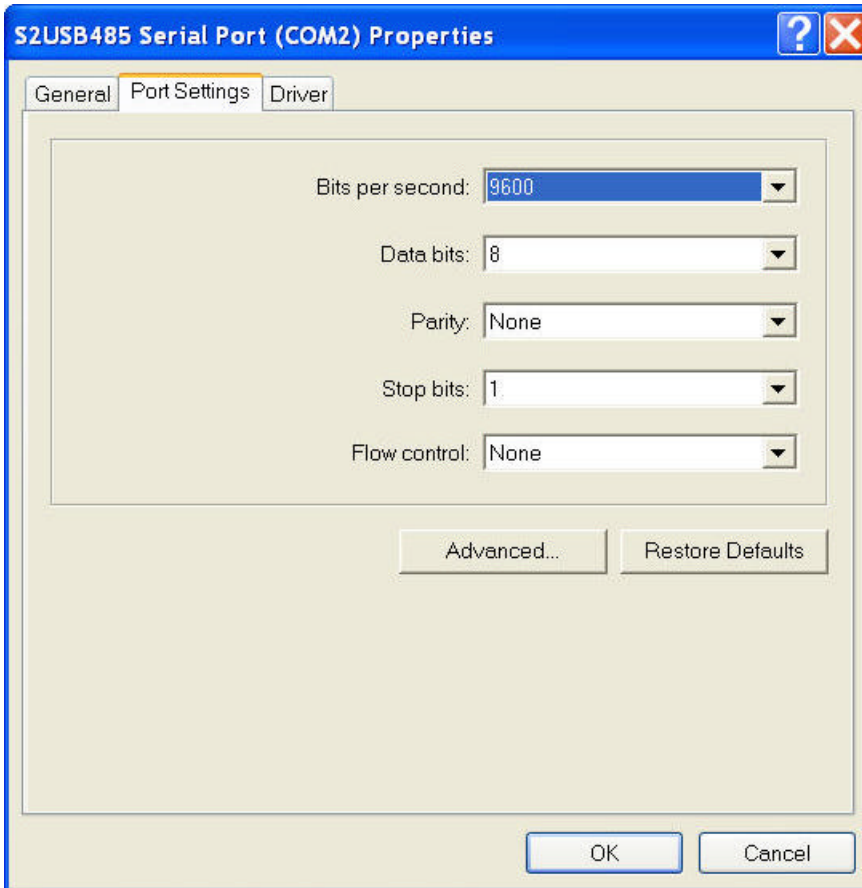




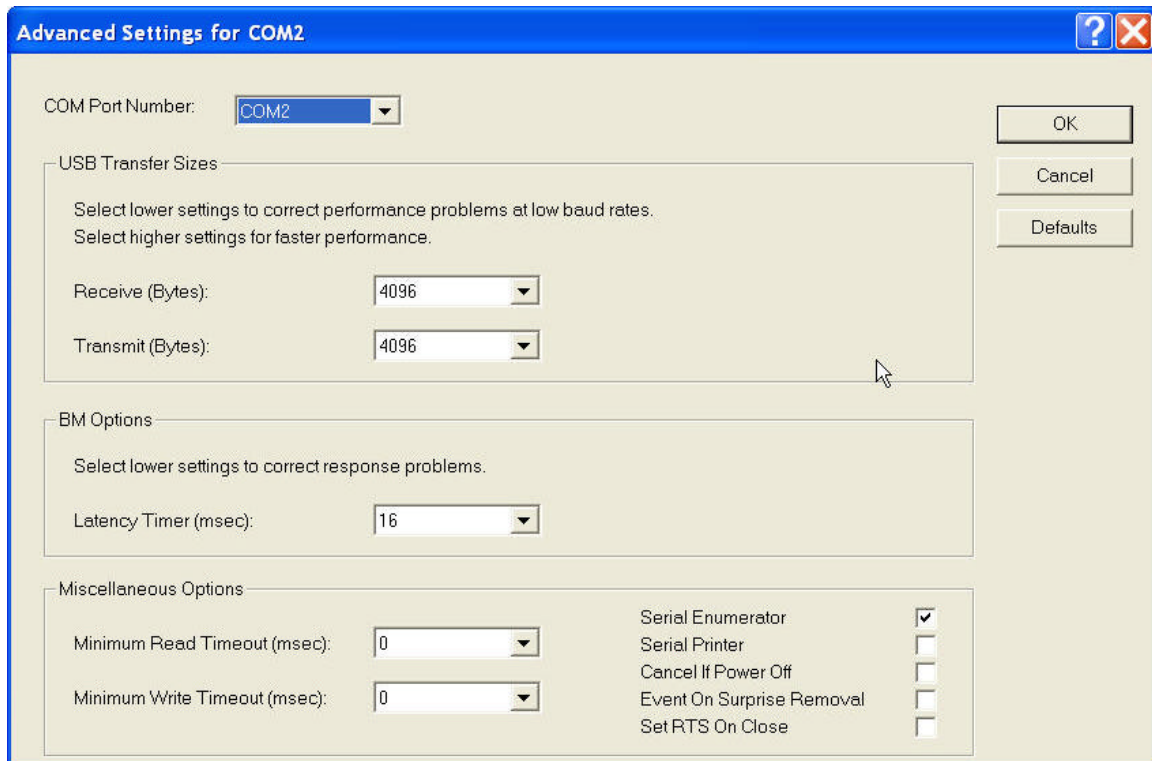
4. Locate the "S2USB485 Serial Port (COMx)" device in the "Ports (COM & LPT)" section. Double click the "S2USB485 Serial Port (COMx)" device to display its properties. You can also reveal the properties, by left-mouse selecting the item, then pressing the right-mouse button, then selecting properties.



5. Select the "Port Settings Tab"



6. Now Select the "Advanced..." button



7. Adjust the device's COM port from the list box at the top. Depending upon your computer, some of the COM (serial) ports may be in use. Although you can force the S2USB485 devices to use a "used" port, doing so may cause strange behavior in existing applications that use these ports.
8. Pressing "OK" in these and the other dialogs will complete the change. Restarting your computer is not necessary, as the serial port change is immediate.